

ITS Executive Steering Committee (ITESC)

Agenda and Materials – December 11, 2016



Agenda

ITS Project Portfolio Prioritization

- S. Malisch, J. Sibenaller

Other Updates

- S. Malisch

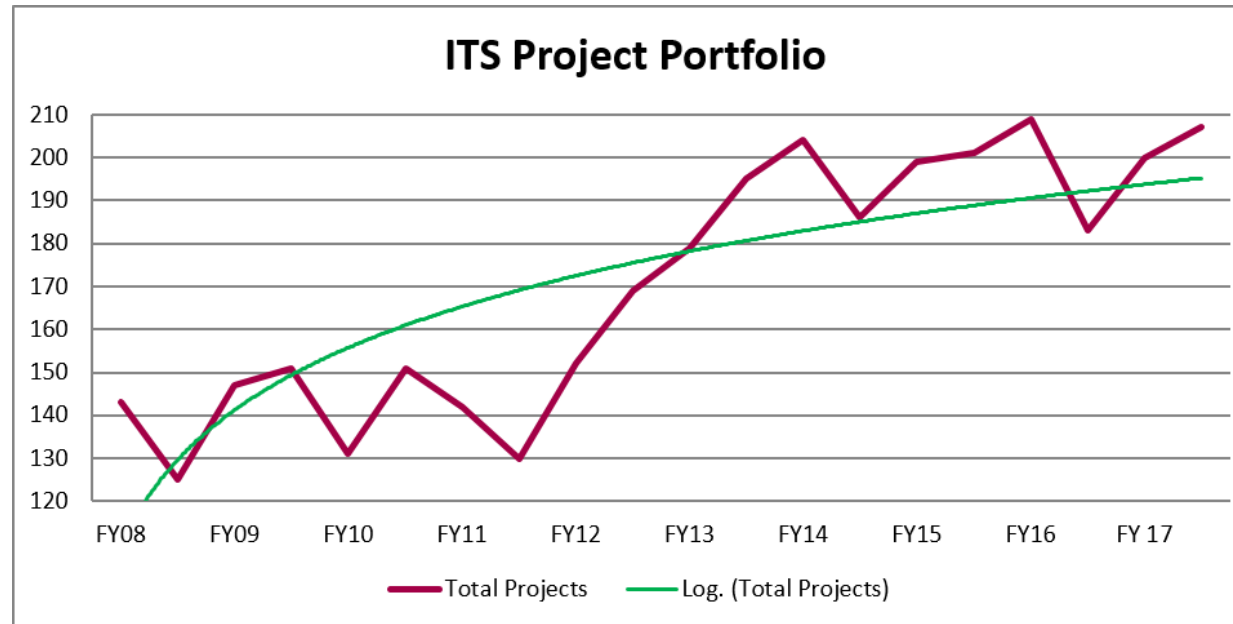
Plan of Record Tracking

POR Activity	Total Count	T-Shirt Sizing Breakdown				
		X-Large	Large	Medium	Small	X-Small
Original FY16 Q3-Q4 POR	200	17	36	94	49	4
Revised FY16 Q3-Q4 POR	200	19	35	93	49	4
New Projects Started	66	1	11	31	18	5
Final FY16 Q3-Q4 POR	266	20	46	124	67	9
Completed Projects	(53)	4	11	18	15	5
Forecasted Completed Projects	(8)	3	1	4	0	0
Duplicate / Canceled	(21)	0	2	9	9	1
Rollover Projects	184	13	32	93	43	3
New Projects not Started	23	7	5	5	5	1
FY17 Q1-Q2 POR (Draft)	207	20	37	98	48	4
Net Change	7	1	2	5	(1)	0

Project Sizing Trend

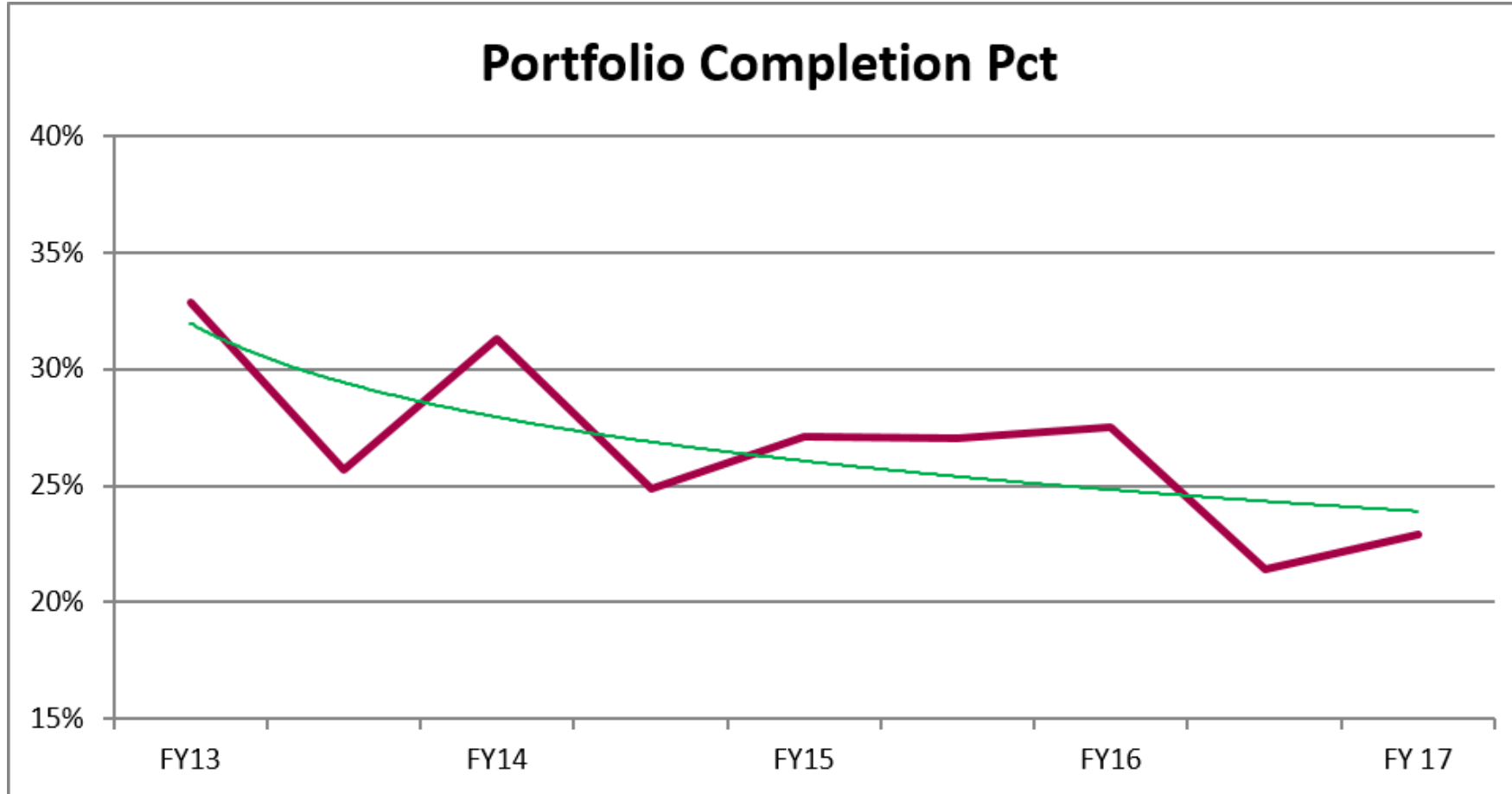
Portfolio Counts

T-Shirt Sizing	Work Effort	FY09		FY10		FY11		FY12		FY13		FY14		FY15		FY16		FY17		
		Q1-Q2	Q3-Q4	Q1-Q2	Q3-Q4	Q1-Q2	Q3-Q4	Q1-Q2	Q3-Q4	Q1-Q2	Q3-Q4	Q1-Q2	Q3-Q4	Q1-Q2	Q3-Q4	Q1-Q2	Q3-Q4	Q1-Q2	Q3-Q4	
TBD	TBD	8	5	2	1	1	2	0	0	0	0	0	0	0	0	0	0	0	0	0
X-Small	< 5 Days	2	12	15	8	6	4	6	10	13	12	12	10	11	7	8	6	4	4	4
Small	5-30 Days	49	56	14	44	35	28	34	44	43	58	56	55	52	56	55	45	49	48	48
Medium	31-60 Days	45	44	67	59	61	64	71	74	75	68	72	74	80	84	85	80	94	98	98
Large	61-120 Days	37	29	32	33	33	19	32	31	37	43	49	34	39	36	41	37	36	37	37
X-Large	>120 Days	6	5	1	6	7	18	9	10	11	14	15	13	17	18	20	15	17	20	20
		147	151	131	151	143	135	152	169	179	195	204	186	199	201	209	183	200	207	207



	Avg.	Min	Max	This Period
Portfolio	170	125	209	207

Completed Project Forecast



61 projects
forecast
completed
this period

	Avg.	Min	Max	This Period
Completed Pct.	28%	21%	33%	23% (forecasted)

Capacity Estimates

T-Shirt Sizing	Work Effort	Initial Project Count*	Project Effort** (FTE)
TBD	TBD	0	0.0
X-Small	< 5 Days	4	0.1
Small	5-30 Days	48	4.3
Medium	31-60 Days	98	18.9
Large	61-120 Days	37	14.2
X-Large	>120 Days	20	22.2
Total		207	59.7

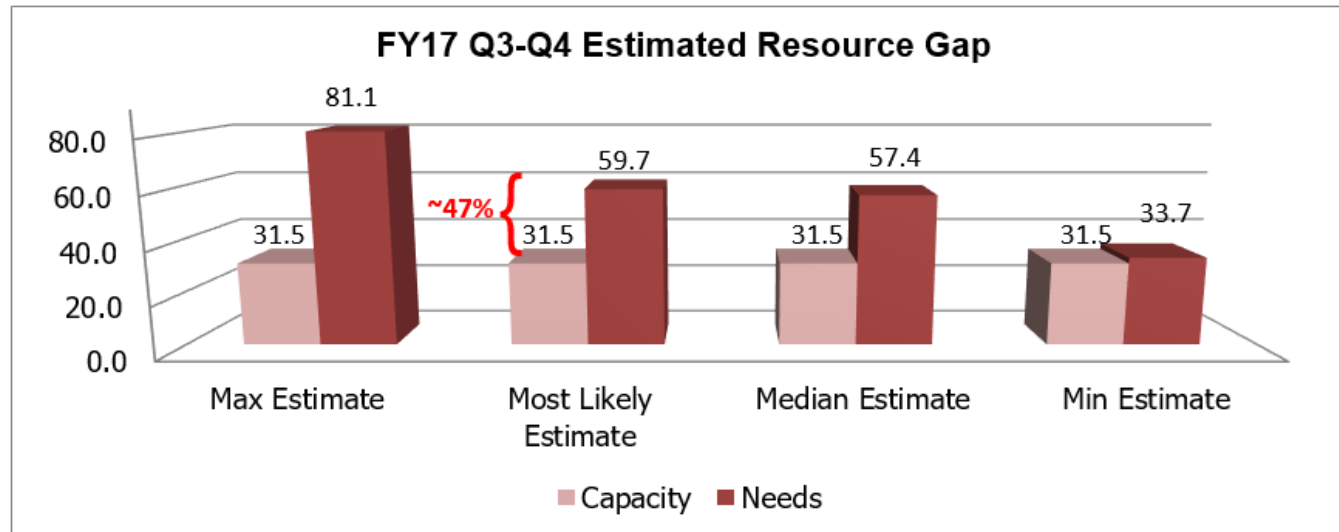
* snapshot as of 12/9/16

** most likely scenario

ITS Capacity/Resource Calculations (FTE)

Full Time	100.0
Part Time	2.3
Annual Total	102.3*

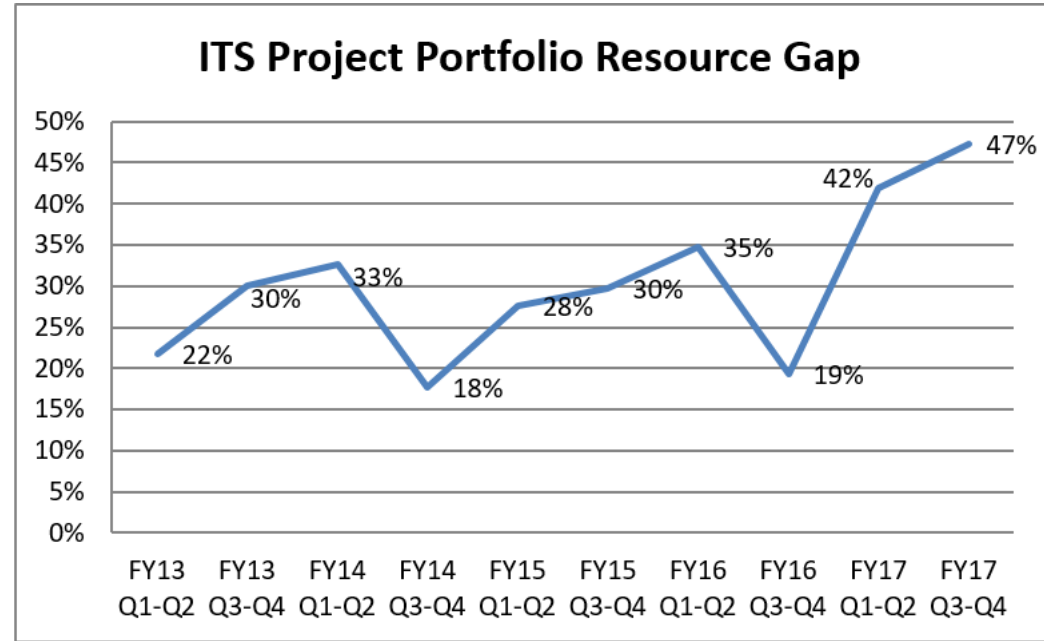
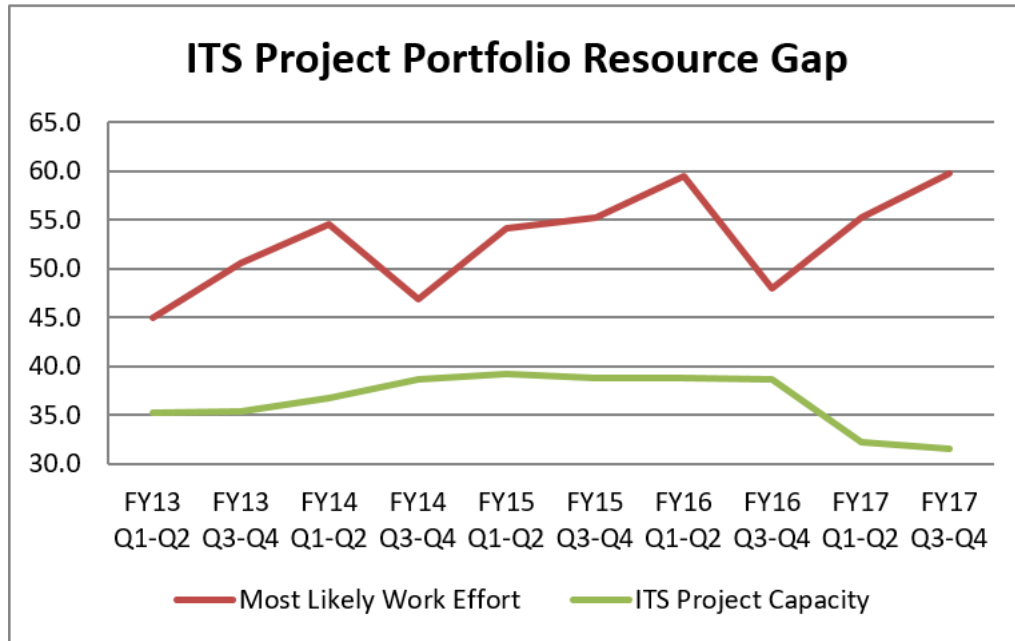
	Est. Effort Allocation	Est. Time Allocation	Most Likely Estimate Gap
Admin.	25.9	25%	47%
Support	44.9	44%	
Project	31.5	31%	
Total	102.3	100%	



*Headcount decrease from FY17 operational budget reductions

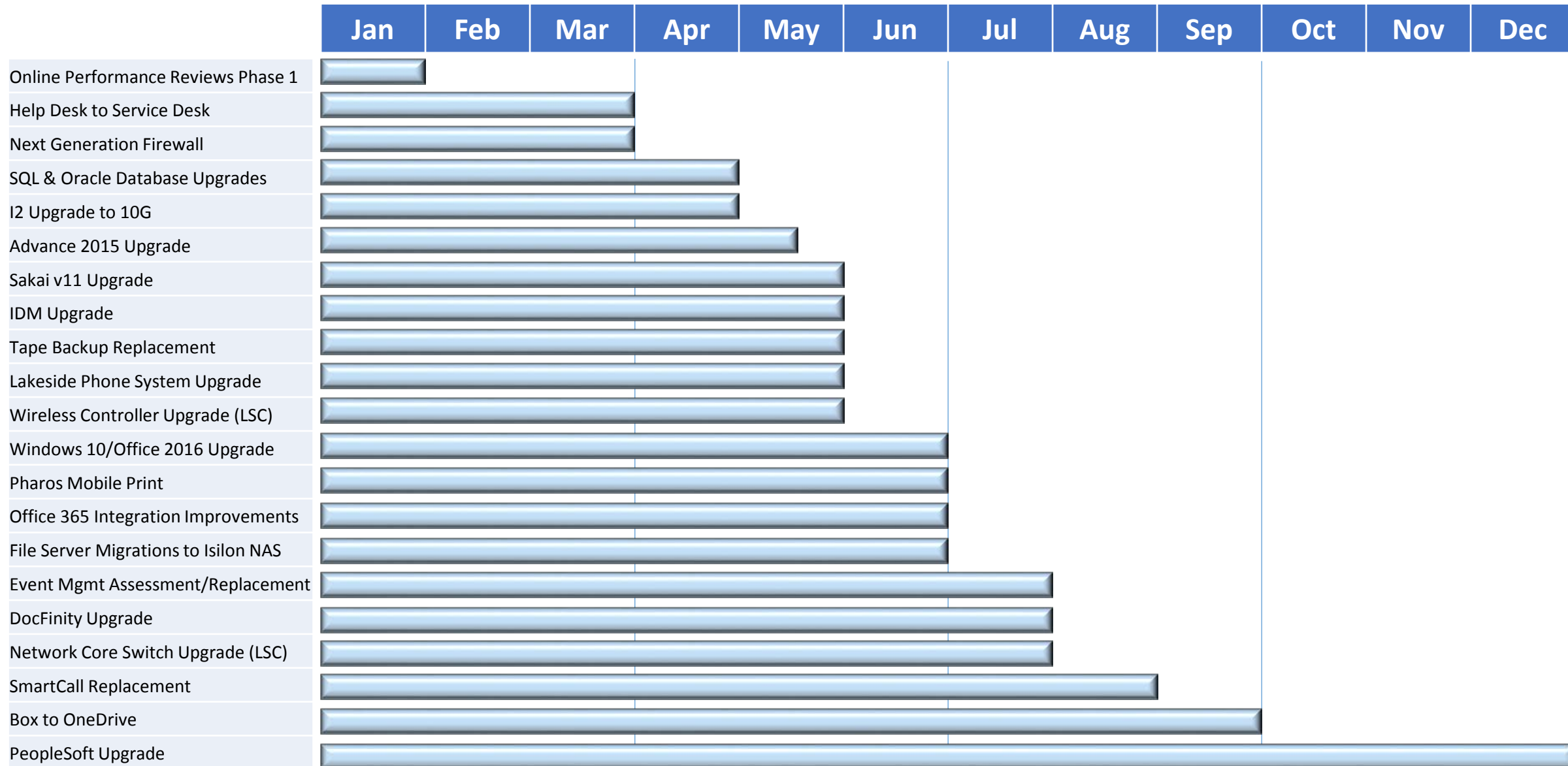
Portfolio Growth Details

	FY13 Q1-Q2	FY13 Q3-Q4	FY14 Q1-Q2	FY14 Q3-Q4	FY15 Q1-Q2	FY15 Q3-Q4	FY16 Q1-Q2	FY16 Q3-Q4	FY17 Q1-Q2	FY17 Q3-Q4	5 Year Avg
Portfolio Count	179	195	204	186	199	201	209	183	200	207	196
Portfolio Growth	6%	9%	5%	-9%	7%	1%	4%	-12%	9%	4%	
Most Likely Work Effort	45.0	50.6	54.6	46.9	54.2	55.2	59.4	47.9	55.3	59.7	52.9
Most Likely Work Effort Growth	8%	11%	7%	-16%	13%	2%	7%	-24%	13%	7%	
ITS Project Capacity	35.2	35.4	36.8	38.6	39.2	38.7	38.7	38.7	32.2	31.5	36.5
ITS Project Capacity Growth	0%	1%	4%	5%	2%	-1%	0%	0%	-20%	-2%*	
Estimated Resource Gap	22%	30%	33%	18%	28%	30%	35%	19%	42%	47%	31%

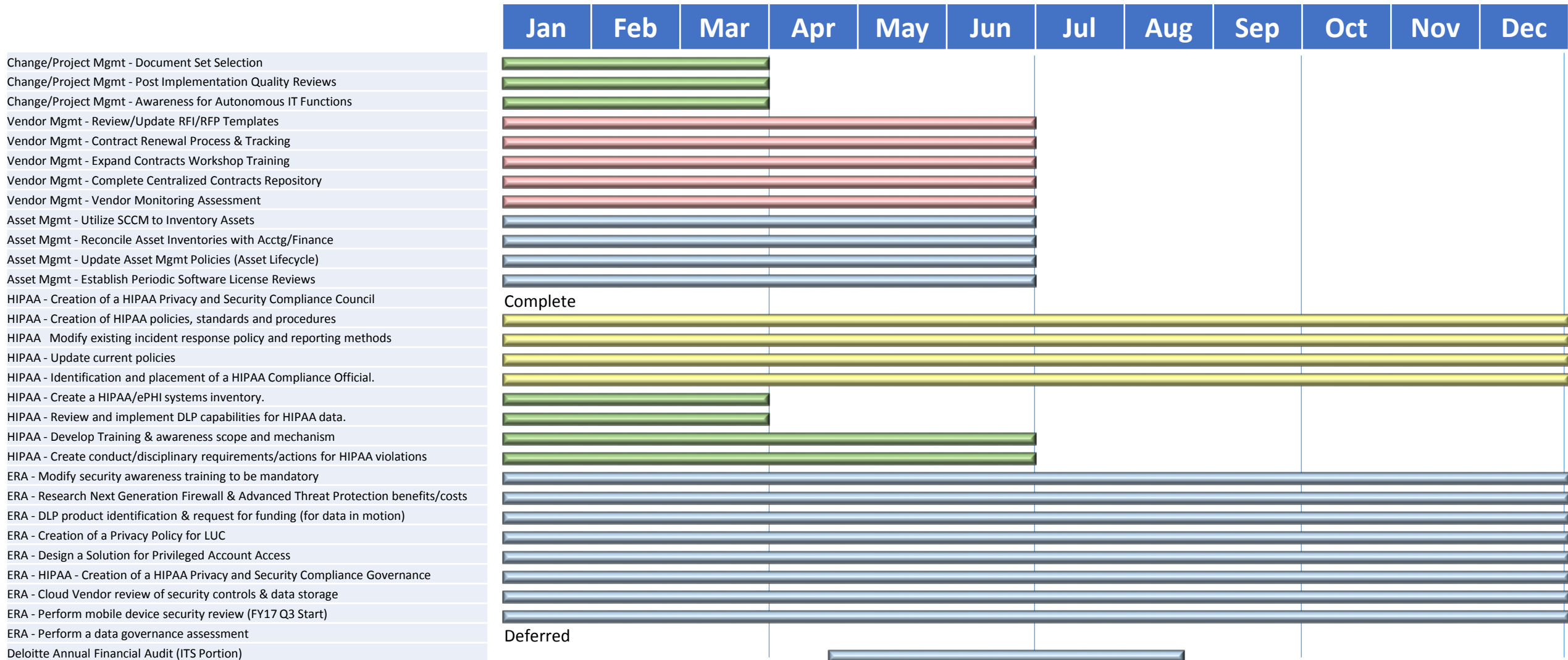


7 *Headcount decrease from FY17 operational budget reductions

Plan of Record Major Upgrades - 2017



Audit Actions & Remediation Tasks - 2017



FY17 Q3-Q4 ITS Pre-Approved/Established Projects

Priority	Row Nbr	Program Group	T-Shirt Sizing	Status	Est. Compl. (QTR)	Primary Customer
	1-6	LOCUS Enhancements (6)	XLarge	Active	TBD	Enterprise/Multiple
A	1	Crystal Report Conversion to XML Publisher	Medium	Active	Q3 FY17	Registration & Records
A	2	Paralegal Studies Special GPA - extend to all students	Small	Active	Q3 FY17	Registration & Records
A	3	Financial Aid - Loan / Disbursements 2016-17	Medium	Active	Q3 FY17	Financial Assistance
A	4	Financial Aid Award Letter processes - Aid Year 2018	Medium	Active	Q4 FY17	Financial Assistance
A	5	Early Alert Referral System	XLarge	Active	Q1 FY18	Provost's Office
A	6	State of IL New Immunization Requirements	Medium	Pending	TBD	Wellness Center
	7-12	Enterprise Content Management (6)	XLarge	Active	TBD	Enterprise/Multiple
A	7	ECM - Electronic Document Retention	Large	Active	Q3 FY17	Information Services
A	8	HSD Research Integrity	Medium	Pending	TBD	Faculty Administration-HSD
A	9	Treasury-Cash Mgmt ECM Implementation - Phase 3	Medium	Pending	Q4 FY17	Finance-Office of VP-CFO
A	10	Docfinity Patch Upgrade 10.13.4	Medium	Active	Q3 FY17	Information Services
A	11	HR ECM - Wage Garnishments, Performance Eval and Salary Planning	Large	Pending	Q4 FY17	Human Resources:Office of VP
A	12	Docfinity Upgrade - Version 11	Large	Pending	TBD	Information Services
	13-15	Business Intelligence/Data Warehouse Program (3)	XLarge	Active	Q3 FY17	Information Technology Services
A	13	Plan 2020 IP 1 Metrics and Dashboard	Large	Active	Q3 FY17	Information Services
A	14	Incorporate EVENT and GRADEBOOK Sakai data into the EDW	Medium	Active	Q3 FY17	Information Services
A	15	Class Utilization version 2	Large	Active	Q3 FY17	Registration & Records
	16-18	LUHS/LUC/HSD Technology Program (3)	XLarge	Active	Q2 FY18	Information Technology Services
A	16	LUHS/LUC/HSD Technology Program	XLarge	Active	Q4 FY17	Information Services
A	17	Application Access and Authentication for HSD	XLarge	Active	Q2 FY18	Information Services
A	18	Identity Management Systems Strategy & Current State Documentation	Large	Pending	Q4 FY17	Information Services
	19-26	Information Security Program (8)	XLarge	Active	TBD	Information Technology Services
A	19	SIEM Replacement	Small	Active	Q3 FY17	Information Services
A	20	Network Access Control Improvements	Medium	Active	Q4 FY17	Information Services
A	21	Continuous Risk Analysis Should Consider Staffing Requirements	Medium	Pending	Q4 FY17	Information Services
A	22	Vulnerability Management Program	XLarge	Active	Q4 FY17	Information Services
A	23	2015 Security Assessment	Medium	Active	Q2 FY18	Information Services
A	24	High Security Lab Environment/Security Operations Center	Medium	Pending	TBD	Information Services
A	25	Password Policies	Large	Pending	Q4 FY17	Information Services

FY17 Q3-Q4 ITS Pre-Approved/Established Projects

Priority	Row Nbr	Program Group	T-Shirt Sizing	Status	Est. Compl. (QTR)	Primary Customer
	27-37	BCDR/Failover (12)	XLarge	Active	TBD	Campus Safety/ Information Technology Services
A	27	Disaster Recovery Plan Development	Large	Active	Q2 FY18	Information Services
A	28	Disaster Recovery Planning	Large	Active	Q2 FY18	Information Services
A	29	Network Disaster Recovery / Redundancy - LSC - Phase 1	Medium	On Hold	Q1 FY18	Information Services
A	30	Maxxess - BCDR Planning	Medium	On Hold	TBD	Campus Safety LSC
A	31	Network Disaster Recovery / Redundancy Phase 2	Medium	On Hold	Q3 FY17	Information Services
A	32	Develop a Disaster Recovery Plan for the Applications Enterprise File Serve	Medium	On Hold	Q4 FY17	Information Services
A	33	Disaster Recovery - Oracle Databases	XLarge	On Hold	Q4 FY17	Information Services
A	34	DR- LuWare	Large	On Hold	TBD	Information Services
A	35	Disaster Recovery Testing - LuWare	Small	On Hold	TBD	Information Services
A	36	Disaster Recovery - CBORD	Medium	Pending	Q1 FY18	Information Services
A	37	Disaster Recovery Maxxess	Medium	Pending	TBD	Information Services
	38-45	Lawson/Kronos Enhancements (3)	XLarge	Active	Q3 FY17	Enterprise/Multiple
A	38	Trinity Migration from Lawson to Workday	XLarge	Active	Q3 FY18	Human Resources
A	39	HR One Exchange Implementation - New Interface for various data	Large	Pending	Q4 FY17	Human Resources
A	40	Lawson Self Service Outside the Firewall	Medium	Pending	Q1 FY18	Office of The President
A	41	2017 Open Enrollment	Medium	Pending	TBD	Human Resources
A	42	ESS Direct Deposit	Small	Pending	TBD	Human Resources
A	43	ESS Manager Drill down	Small	Pending	TBD	Human Resources
A	44	ESS Federal Tax Change	Small	Pending	TBD	Human Resources
A	45	ESS Life Events - Benefits	Small	Pending	TBD	Human Resources

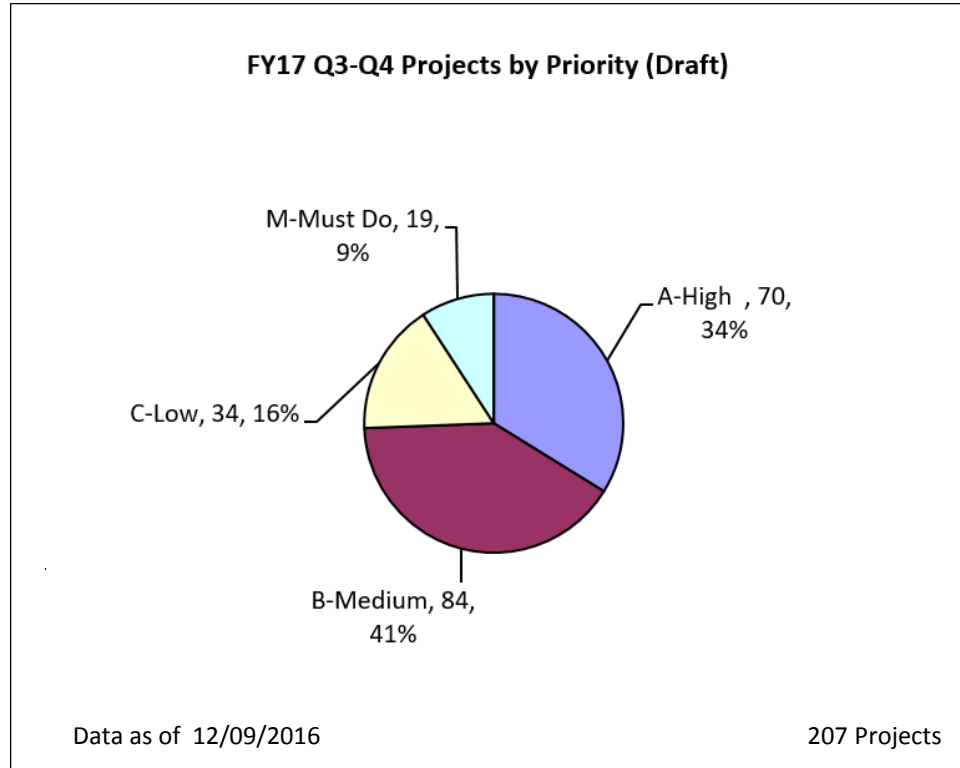
Pri	Row Nbr	Program Group	Recommended Ranking	Prior ITESC Ranking	PRB Ranking	T-Shirt Sizing	Status	Est. Compl. (QTR)	Primary Customer
	46-52	Student System Upgrade (7)	1	---	1	XLarge	Pending	Q2 FY18	Registration & Records
A	46	LOCUS upgrade (CS 9.2 & PT 8.55) - Phase I				Large	Pending	Q2 FY18	Registration & Records
A	47	LOCUS Upgrade - CS PeopleTools 8.55 Upgrade				XLarge	Pending	Q2 FY18	Registration & Records
A	48	LOCUS Upgrade -iHub (Portal) PeopleTools 8.55 Upgrade				XLarge	Pending	Q2 FY18	Registration & Records
A	49	LOCUS Upgrade-- Search Engine Upgrade- Elasticsearch				XLarge	Pending	Q2 FY18	Registration & Records
A	50	LOCUS Upgrade--CS 9.2 Database and Application Upgrade				XLarge	Pending	Q2 FY18	Registration & Records
A	51	LOCUS Upgrade- Decoupling Application and PeopleTools Software				XLarge	Pending	Q2 FY18	Registration & Records
A	52	LOCUS Upgrade - Evaluate Change Management and Testing Tools				XLarge	Pending	Q2 FY18	Registration & Records
	53-56	Advancement (4)	2	1	2	XLarge	Active	TBD	Development & Donor Services
A	53	Advance Upgrade Program				XLarge	Active	Q4 FY17	Development & Donor Services
A	54	Advancement - Data Loader				Medium	Active	Q1 FY18	Development & Donor Services
A	55	Alumni/Giving Call Campaign Software Replacement				Medium	Active	Q1 FY18	Development & Donor Services
A	56	Advancement Report Conversion				Large	Pending	TBD	Development & Donor Services
A	57	12C Database Upgrade (Required for PS Upgrade)	3	4	3	Xlarge	Active	Q3 FY17	Information Services
	58-59	Online Performance Management System (2)	4	3	5	XLarge	Active	TBD	Human Resources
A	58	Online Performance Management System - Phase 1				Large	Active	Q3 FY17	Human Resources
A	59	Online Performance Management System - Phase 2				Large	Pending	TBD	Human Resources
	60-61	Maxxess (2)	5	2	4	XLarge	Pending	TBD	Enterprise/Multiple
A	60	Maxxess - Secondary Access Level Web Application				Xlarge	Pending	TBD	Human Resources:Office of VP
A	61	Maxxess - Security Log Interface				Large	Pending	TBD	Campus Safety LSC
A	62	Online Exam Proctoring Solutions - Pilot	6	5	6	Large	On Hold	Q1 FY18	Provost's Office
A	63	Phone System Replacement - Phase 3	7	9	Not provided for ranking	Xlarge	Active	Q4 FY17	Information Services
A	64	LCFS Technology Needs for EMR, HIPAA, and PCI	8	8	7	Medium	Active	Q3 FY17	Loyola Community and Family Services
A	65	Sakai 11 Upgrade	9	---	Not provided for ranking	Large	Active	Q4 FY17	Information Services
A	66	Create a Hybrid On-line ABSN Degree Program with Orbis Education	10	---	8 (tie)	Small	Pending	TBD	Niehoff School of Nursing
A	67	Evaluation of Event Management Systems	11	---	Not provided for ranking	Large	Active	Q4 FY17	Alumni Relations
B	68	Faculty Information System Suite Enhancements	12	6	Not provided for ranking	Medium	Active	TBD	Provost's Office
A	69	Secure Email	13	---	Not provided for ranking	Large	Pending	TBD	Provost HSD
A	70	Evaluate Vendors to Host the Athletic Department's Website	14	---	Not provided for ranking	Small	Pending	TBD	Athleti
A	71	Compliance Tracking for Various Initiatives	15	---	8 (tie)	Large	Pending	Q4 FY17	Enterprise/Multiple
A	72	ITS Help Desk to Service Desk	16	13	Not provided for ranking	Large	Active	Q3 FY17	Information Services

Additional Portfolio Data Tracking

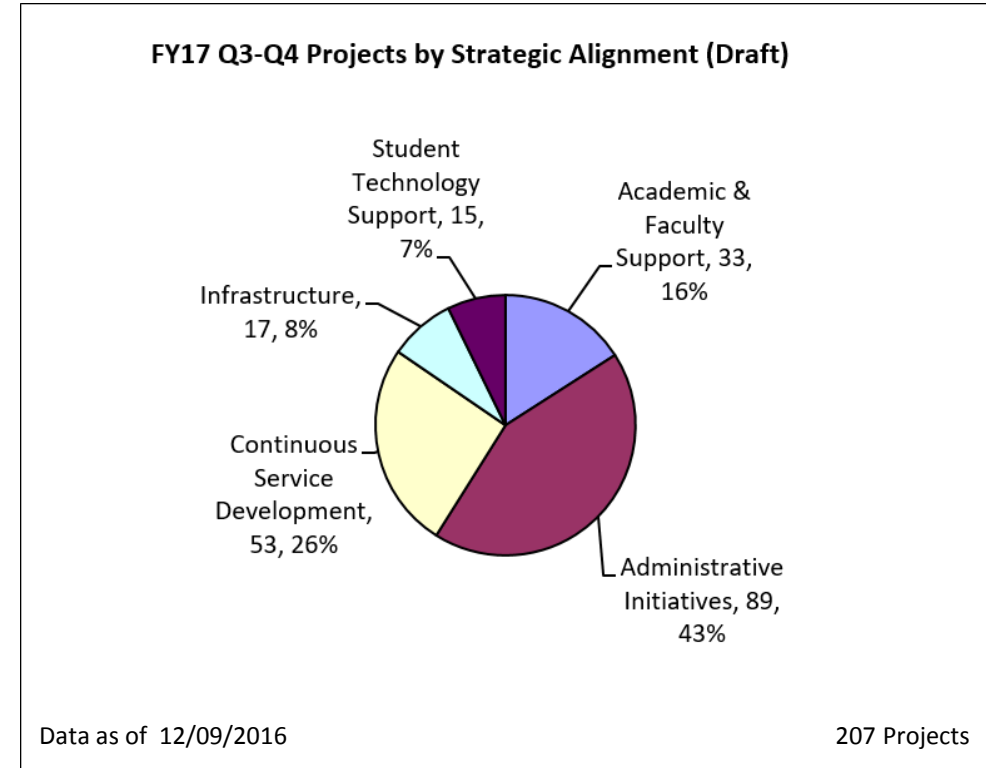
October 11, 2016



FY17 Q3-Q4 Plan of Record (Draft)



Priority	Count
A-High	70
B-Medium	84
C-Low	34
M-Must Do	19
	207



Strategic Alignment	Count
Academic & Faculty Support	33
Administrative Initiatives	89
Continuous Service Development	53
Infrastructure	17
Student Technology Support	15
	207